



Title Plan - LT 472675

Survey Number LT 472675
Surveyor Reference E18239 Rosemerryn Stage 4
Surveyor Kevin Martin Hayes
Survey Firm Davie Lovell-Smith Ltd
Surveyor Declaration

Survey Details

Dataset Description Lots 330-348, 351-356, 620, 621, 703, 819 and 820 being subdivision of Lot 703 DP 461935
Status Initiated
Land District Canterbury
Submitted Date
Survey Class Class A
Survey Approval Date
Deposit Date

Territorial Authorities

Selwyn District

Comprised In

CT 608420

Created Parcels

Parcels	Parcel Intent	Area	CT Reference
Lot 330 Deposited Plan 472675	Fee Simple Title	0.0600 Ha	645139
Lot 331 Deposited Plan 472675	Fee Simple Title	0.0572 Ha	645140
Lot 332 Deposited Plan 472675	Fee Simple Title	0.0498 Ha	645141
Lot 333 Deposited Plan 472675	Fee Simple Title	0.0504 Ha	645142
Lot 334 Deposited Plan 472675	Fee Simple Title	0.0504 Ha	645143
Lot 335 Deposited Plan 472675	Fee Simple Title	0.0573 Ha	645144
Lot 336 Deposited Plan 472675	Fee Simple Title	0.0699 Ha	645145
Lot 337 Deposited Plan 472675	Fee Simple Title	0.0631 Ha	645146
Lot 338 Deposited Plan 472675	Fee Simple Title	0.0544 Ha	645147
Lot 339 Deposited Plan 472675	Fee Simple Title	0.0535 Ha	645148
Lot 340 Deposited Plan 472675	Fee Simple Title	0.0630 Ha	645149
Lot 341 Deposited Plan 472675	Fee Simple Title	0.0684 Ha	645150
Lot 342 Deposited Plan 472675	Fee Simple Title	0.0658 Ha	645151
Lot 343 Deposited Plan 472675	Fee Simple Title	0.0626 Ha	645152
Lot 344 Deposited Plan 472675	Fee Simple Title	0.0626 Ha	645153
Lot 345 Deposited Plan 472675	Fee Simple Title	0.0626 Ha	645154
Lot 346 Deposited Plan 472675	Fee Simple Title	0.0700 Ha	645155
Lot 347 Deposited Plan 472675	Fee Simple Title	0.0600 Ha	645156
Lot 348 Deposited Plan 472675	Fee Simple Title	0.0600 Ha	645157
Lot 351 Deposited Plan 472675	Fee Simple Title	0.0607 Ha	645158



Title Plan - LT 472675

Created Parcels

Parcels	Parcel Intent	Area	CT Reference
Lot 352 Deposited Plan 472675	Fee Simple Title	0.0607 Ha	645159
Lot 353 Deposited Plan 472675	Fee Simple Title	0.0607 Ha	645160
Lot 354 Deposited Plan 472675	Fee Simple Title	0.0638 Ha	645161
Lot 355 Deposited Plan 472675	Fee Simple Title	0.0664 Ha	645162
Lot 356 Deposited Plan 472675	Fee Simple Title	0.0611 Ha	645163
Lot 621 Deposited Plan 472675	Vesting on Deposit for Local Purpose Reserve	0.0504 Ha	645165
Lot 819 Deposited Plan 472675	Vesting on Deposit for Road	0.0196 Ha	
Area P Deposited Plan 472675	Easement		
Area A Deposited Plan 472675	Easement		
Lot 703 Deposited Plan 472675	Fee Simple Title	77.0516 Ha	645842
Area E Deposited Plan 472675	Easement		
Area D Deposited Plan 472675	Easement		
Area C Deposited Plan 472675	Easement		
Lot 820 Deposited Plan 472675	Vesting on Deposit for Road	0.4589 Ha	
Lot 620 Deposited Plan 472675	Vesting on Deposit for Local Purpose Reserve	0.0101 Ha	645164
Area B Deposited Plan 472675	Easement		
Total Area		79.1050 Ha	



DAVIE LOVELL·SMITH

PLANNING SURVEYING ENGINEERING

Davie, Lovell-Smith Ltd
 116 Wrights Road,
 PO Box 679, Christchurch 1,
 New Zealand
 Telephone (03) 379-0793,
 E-mail: office@dls.co.nz

Our Ref: F18239

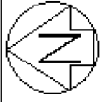
D.P.472675

SCHEDULE OF EASEMENTS IN GROSS

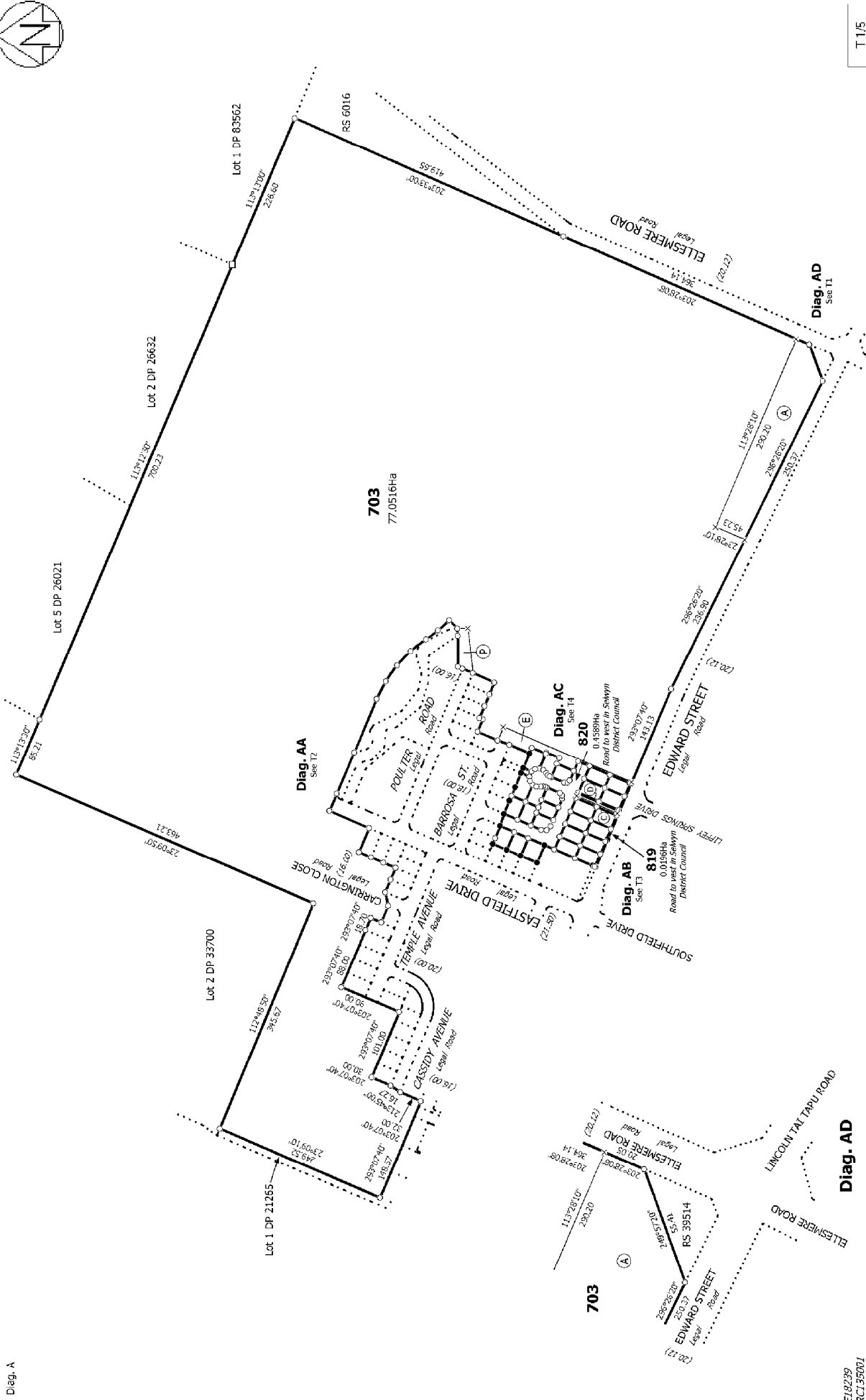
Purpose	Servient Tenement	Shown	Grantee
Right to convey electricity in gross.	620	B	Orion New Zealand Limited
	621	D	
Right to convey telecommunications and computer media in gross.	621	D	Enable New Zealand Limited
Right to drain sewage in gross.	621	C & D	Selwyn District Council
Right to drain water in gross.	Lot 703	E	Selwyn District Council

SCHEDULE OF EXISTING EASEMENTS

Purpose	Servient Tenement	Shown	Document
Right to drain water in gross.	Lot 703	A & P	EI 9370643.10



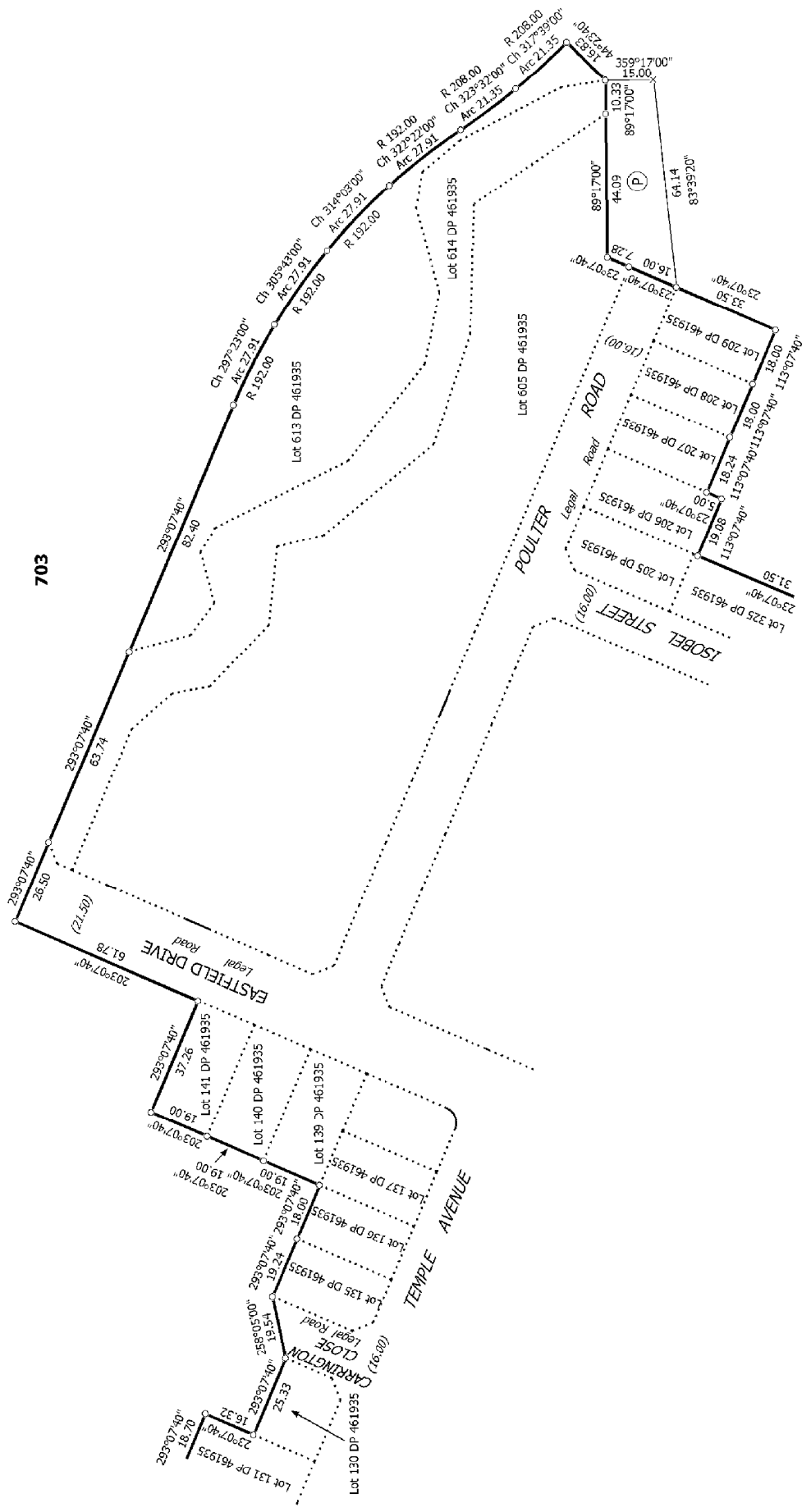
Diag. A



T 1/5

E18239
RC135001

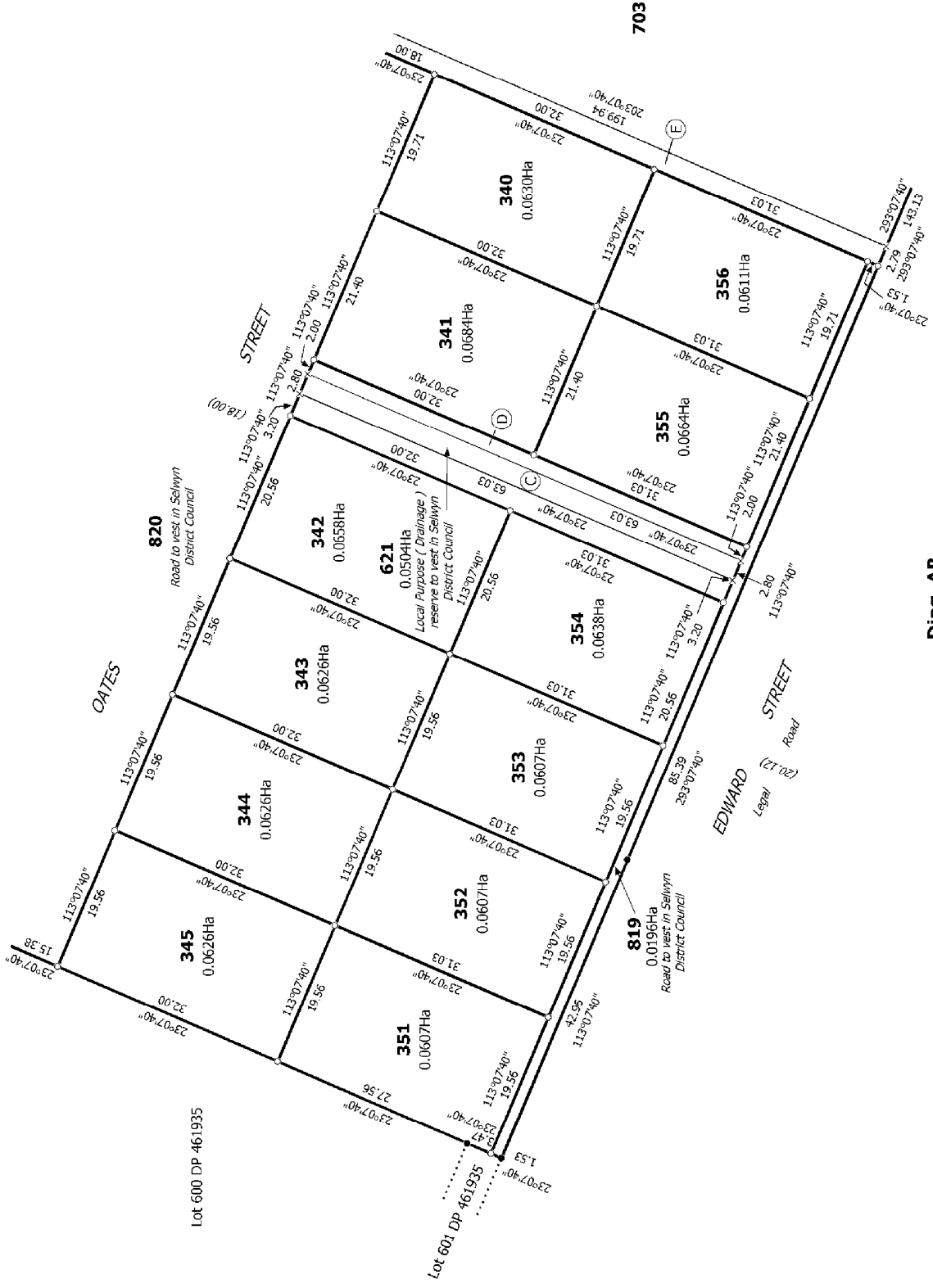
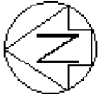
Land District: Canterbury	Lots 330-348, 351-356, 620, 621, 703, 819 and 820 being subdivision of Lot 703 DP 461935	Title Plan LT 472675 DRAFT
Digitally Generated Plan Generated on: 25/02/2014 11:51am Page 4 of 8	Surveyor: Kevin Martin Hayes Firm: Davis Lovell-Smith Ltd	



Diag. AA

T 2/5

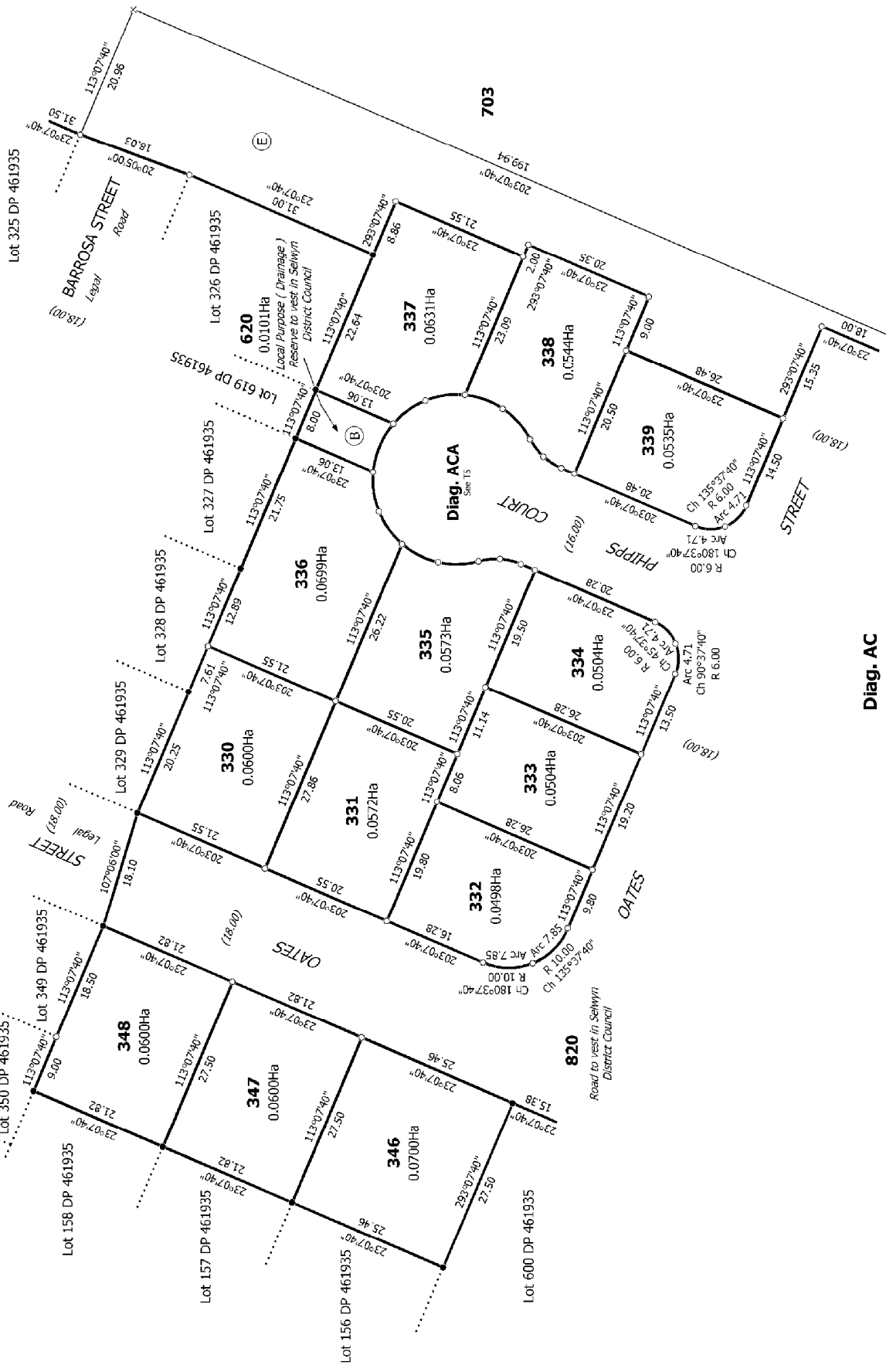
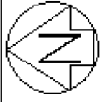
Land District: Canterbury	Title Plan LT 472675 DRAFT
Digitally Generated Plan Generated on: 25/02/2014 11:51am Page 5 of 8	Surveyor: Kevin Martin Hayes Firm: Davis Lovell-Smith Ltd
Lots 330-348, 351-356, 620, 621, 703, 819 and 820 being subdivision of Lot 703 DP 461935	



Diag. AB

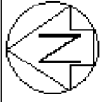
T 3/5

Land District: Canterbury	Title Plan LT 472675 DRAFT
Digitally Generated Plan Generated on: 25/02/2014 11:51am Page 6 of 8	Surveyor: Kevin Martin Hayes Firm: Davis Lovell-Smith Ltd
Lots 330-348, 351-356, 620, 621, 703, 819 and 820 being subdivision of Lot 703 DP 461935	



T 415

Land District: Canterbury	Title Plan LT 472675 DRAFT
Digitally Generated Plan Generated on: 25/02/2014 11:51am Page 7 of 8	Surveyor: Kevin Martin Hayes Firm: Davis Lovell-Smith Ltd
Lots 330-348, 351-356, 620, 621, 703, 819 and 820 being subdivision of Lot 703 DP 461935	



T 5/5

Title Plan
LT 472675
DRAFT

Surveyor: Kevin Martin Hayes
Firm: Davis Lovell-Smith Ltd

Lots 330-348, 351-356, 620, 621, 703, 819 and 820 being subdivision of Lot 703
DP 461935

Diag. ACA

Land District: Canterbury

Digitally Generated Plan
Generated on: 25/02/2014 11:51am Page 6 of 8

